



ИИИ.М.М.



Фитинг низкого давления

Н  
|



ИИИHypress  
IMM Group



● ● ● ● ● ● **Фитинг низкого давления / Low pressure fittings**

Страница / Page      2                      2                      2



**P050**



**P150**



**P350**

Накидная гайка BSP 60° 90° - UniLock      Накидная гайка BSP 60° - UniLock      Штуцер BSP конус 60° - UniLock

Страница / Page      3                      4                      5                      5



**A**



**BA**

Алюминиевая обжимная муфта / мутальная обжимная муфта  
Aluminium ferrule      Steel ferrule



**0345B**

Штуцер BSP торцевое уплотнение



**0350B**

Штуцер BSP конус 60°

Страница / Page      6                      7                      8                      9                      9



**0051B**

Накидная гайка BSP 60° 90°



**0151B**

Накидная гайка BSP 45° 60°



**0251B**

Накидная гайка BSP 60°



**0060B**

Ниппель BSP торцевое уплотнение



**0160B**

90° Накидная гайка BSP плоское уплотнение

Страница / Page      10                      10                      11                      11



**0400B**

Штуцер метрика 60°



**0100B**

Ниппель метрика 60°



**0200B**

Ниппель 90° метрика 60°



**0300B**

Ниппель 45° метрика 60°

Страница / Page      12                      12



**1350B**

Метрический банджо



**1400B**

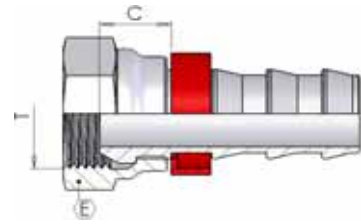
BSP Banjo

Dimensions and general characteristics may be changed at any time without prior notice.

Data contained herein are for information purpose only, and it does not enlarge, amend or imply any warranty other than provided by us with the product. Any use of the product not in conformance with our instructions may be dangerous.

## P050 Накидная гайка BSP 60° - UniLock

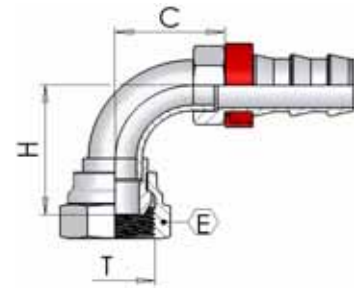
BSP Female 60° cone - UniLock



part number	hose I.D.		Dimension			
			dash size	thread	hex	cut-off
	in	mm		T	E	C
P050-04-04	1/4	6,4	04	1/4-19	17	10
P050-06-06	3/8	9,5	06	3/8-19	19	10
P050-08-08	1/2	12,7	08	1/2-14	27	13
P050-12-12	3/4	19	12	3/4-14	32	16
P050-16-16	1	25,4	16	1-11	38	15

## P150 90° Накидная гайка BSP 60° - UniLock

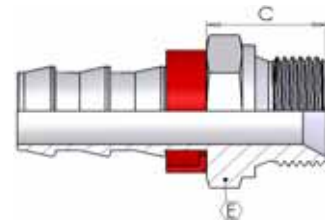
BSP 90° Swept elbow 60° cone - UniLock



part number	hose I.D.		Dimension				
			dash size	thread	hex	drop	cut-off
	in	mm		T	E	H	C
P150-04-04	1/4	6,4	04	1/4-19	17	26	20
P150-06-06	3/8	9,5	06	3/8-19	19	28	21
P150-08-08	1/2	12,7	08	1/2-14	27	35	26
P150-12-12	3/4	19	12	3/4-14	32	46	37
P150-16-16	1	25,4	16	1-11	38	55	44

## P350 Штуцер BSP конус 60° - UniLock

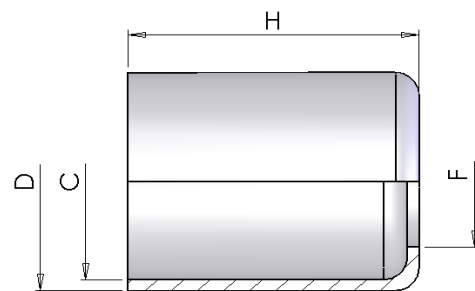
BSP Male Parallel 60° cone - UniLock



part number	hose I.D.		Dimension			
			dash size	thread	hex	cut-off
	in	mm		T	E	C
P350-04-04	1/4	6,4	04	1/4-19	19	20
P350-06-06	3/8	9,5	06	3/8-19	22	22
P350-08-08	1/2	12,7	08	1/2-14	27	25
P350-12-12	3/4	19	12	3/4-14	32	27
P350-16-16	1	25,4	16	1-11	41	30

## A **Алюминиевая обжимная муфта**

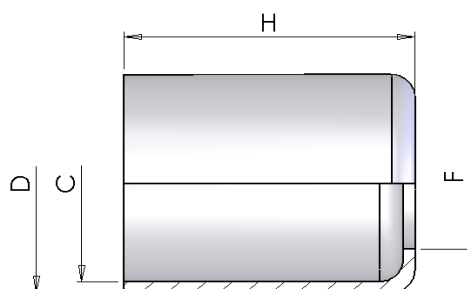
Aluminium ferrule



part number	Dimensions			
	D	C	F	H
A11x13	13	11	8	16
A12x14	14	12	8	17
A13x15	15	13	9	20
A14x16	16	14	9	20
A15x17	17	15	11	20
A16x18	18	16	12	23
A17x19	19	17	12	23
A18x20	20	18	12	23
A19x21	21	19	15	25
A20x22	22	20	15	25
A21x23	23	21	15	25
A22x24	24	22	15	25
A23x25	25	23	16	26
A24x26	26	24	15	26
A26x28	28	26	20	30
A27x29	29	27	20	30
A28x30	30	28	20	30
A30x32	32	30	21	30
A32x34	34	32	22	30
A34x36	36	34	27	35
A36x38	38	36	26	36
A38x40	40	38	27	36
A42x45	45	42	32	40

**BA Стальная обжимная муфта**

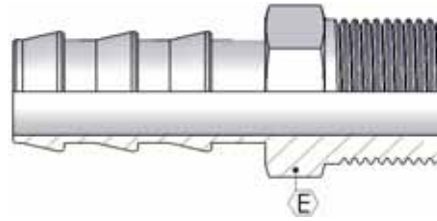
Steel ferrule



part number	Dimensions			
	D	C	F	H
BA-021-024	24	21	16	31
BA-022-025	25	22	16	31
BA-024-027	27	24	18	31
BA-027-030	30	27	20	34
BA-029-032	32	29	21	35
BA-032-035	35	32	23	36
BA-035-038	38	35	27	36
BA-037-040	40	37	28	38
BA-039-042	42	39	29	40
BA-042-045	45	42	32	42
BA-046-050	50	46	34	46
BA-048-052	52	48	35	46
BA-051-055	55	51	42	48
BA-056-060	60	56	43	50
BA-061-065	65	61	45	51
BA-065-070	70	65	53	54
BA-070-075	75	70	55	56
BA-077-082	82	77	65	61
BA-080-085	85	80	68	64
BA-085-090	90	85	68	63
BA-095-100	100	95	78	68
BA-100-105	105	100	84	76

## 0345B Штуцер BSP торцевое уплотнение

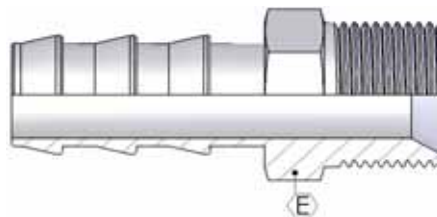
BSP Male - Flat Seat



part number	hose I.D.		Dimensions		
			DN	thread	hex
	in	mm		T	E
0345B04-02	1/4	6,4	06	1/8	14
0345B04-04	1/4	6,4	06	1/4	14
0345B05-04	5/16	7,9	08	1/4	14
0345B05-06	5/16	7,9	08	3/8	17
0345B06-04	3/8	9,5	10	1/4	17
0345B06-06	3/8	9,5	10	3/8	17
0345B06-08	3/8	9,5	10	1/2	22
0345B08-06	1/2	12,7	13	3/8	19
0345B08-08	1/2	12,7	13	1/2	22
0345B10-06	5/8	15,9	16	3/8	19
0345B10-08	5/8	15,9	16	1/2	22
0345B10-12	5/8	15,9	16	3/4	27
0345B12-08	3/4	19	19	1/2	24
0345B12-12	3/4	19	19	3/4	29
0345B12-16	3/4	19	19	1	34
0345B16-12	1	25,4	25	3/4	30
0345B16-16	1	25,4	25	1	43
0345B20-12	1.1/4	31,8	32	3/4	34
0345B20-16	1.1/4	31,8	32	1	36
0345B20-20	1.1/4	31,8	32	1.1/4	42
0345B24-20	1.1/2	38,1	38	1.1/4	42
0345B24-24	1.1/2	38,1	38	1.1/2	50
0345B32-32	2	50,8	50	2	60
0345B40-40	2.1/2	63,5	70	2.1/2	75

## 0350B Штуцер BSP конус 60°

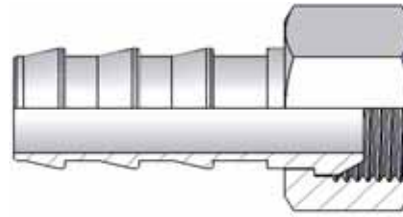
BSP Male Parallel 60° cone



part number	hose I.D.		Dimensions		
			DN	thread	hex
	in	mm		T	E
0350B04-02	1/4	6,4	06	1/8	14
0350B04-04	1/4	6,4	06	1/4	19
0350B05-04	5/16	7,9	08	1/4	19
0350B06-04	3/8	9,5	10	1/4	19
0350B06-06	3/8	9,5	10	3/8	22

**0051B Накидная гайка BSP 60°**

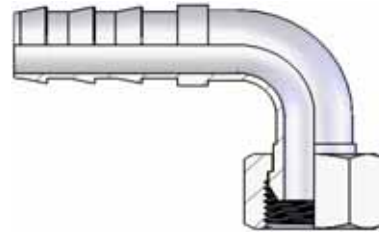
BSP Female 60° cone



part number	hose I.D.		Dimensions		
	in	mm	DN	thread	
				T	
0051B03-02	3/16	4,8	05	1/8	
0051B04-02	1/4	6,4	06	1/8	
0051B04-04	1/4	6,4	06	1/4	
0051B05-04	5/16	7,9	08	1/4	
0051B05-06	5/16	7,9	08	3/8	
0051B06-06	3/8	9,5	10	3/8	
0051B06-08	3/8	9,5	10	1/2	
0051B08-06	1/2	12,7	13	3/8	
0051B08-08	1/2	12,7	13	1/2	
0051B10-08	5/8	15,9	16	1/2	
0051B10-12	5/8	15,9	16	3/4	
0051B12-12	3/4	19	19	3/4	
0051B12-16	3/4	19	19	1	
0051B16-16	1	25,4	25	1	
0051B20-20	1.1/4	31,8	32	1.1/4	
0051B20-24	1.1/4	31,8	32	1.1/2	
0051B24-24	1.1/2	38,1	38	1.1/2	
0051B32-32	2	50,8	50	2	
0051B40-40	2.1/2	63,5	60	2.1/2	
0051B48-48	3	76,2	70	3	

**0151B 90° Накладная гайка BSP 60°**

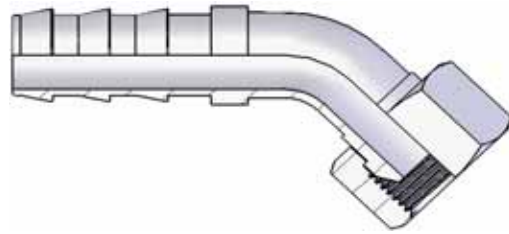
BSP 90° Swept elbow 60° cone



part number	hose I.D.		Dimensions		
	in	mm	DN	thread	
				T	
0151B04-04	1/4	6,4	06	1/4	
0151B05-04	5/16	7,9	08	1/4	
0151B05-06	5/16	7,9	08	3/8	
0151B06-06	3/8	9,5	10	3/8	
0151B06-08	3/8	9,5	10	1/2	
0151B08-06	1/2	12,7	13	3/8	
0151B08-08	1/2	12,7	13	1/2	
0151B08-12	1/2	12,7	13	3/4	
0151B10-08	5/8	15,9	16	1/2	
0151B10-12	5/8	15,9	16	3/4	
0151B12-12	3/4	19	19	3/4	
0151B12-16	3/4	19	19	1	
0151B16-12	1	25,4	25	3/4	
0151B16-16	1	25,4	25	1	
0151B16-20	1	25,4	25	1.1/4	
0151B20-20	1.1/4	31,8	32	1.1/4	
0151B24-24	1.1/2	38,1	38	1.1/2	
0151B32-32	2	50,8	50	2	
0151B40-40	2.1/2	63,5	60	2.1/2	

**0251B 45° Накладная гайка BSP 60°**

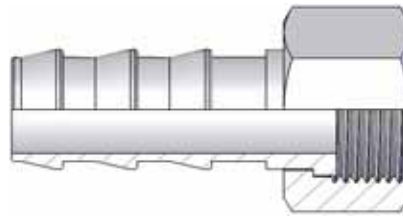
BSP 45° Swept elbow 60° cone



part number	hose I.D.		Dimensions		
	in	mm	DN	thread	
				T	
<b>0251B04-04</b>	1/4	6,4	06	1/4	
<b>0251B05-06</b>	5/16	7,9	08	3/8	
<b>0251B06-06</b>	3/8	9,5	10	3/8	
<b>0251B06-08</b>	3/8	9,5	10	1/2	
<b>0251B08-06</b>	1/2	12,7	13	3/8	
<b>0251B08-08</b>	1/2	12,7	13	1/2	
<b>0251B10-12</b>	5/8	15,9	16	3/4	
<b>0251B12-12</b>	3/4	19	19	3/4	
<b>0251B12-16</b>	3/4	19	19	1	
<b>0251B16-16</b>	1	25,4	25	1	
<b>0251B20-20</b>	1.1/4	31,8	32	1.1/4	
<b>0251B24-24</b>	1.1/2	38,1	38	1.1/2	
<b>0251B32-32</b>	2	50,8	50	2	

**0060B Ниппель BSP торцевое уплотнение**

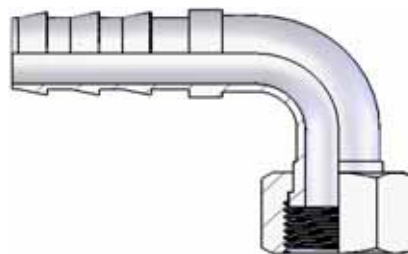
BSP Female Flat Seal



part number	hose I.D.		Dimensions		
	in	mm	DN	thread	
				T	
0060B04-04	1/4	6,4	06	1/4	
0060B05-04	5/16	7,9	08	1/4	
0060B05-06	5/16	7,9	08	3/8	
0060B06-06	3/8	9,5	10	3/8	
0060B06-08	3/8	9,5	10	1/2	
0060B08-08	1/2	12,7	13	1/2	
0060B10-12	5/8	15,9	16	3/4	
0060B12-12	3/4	19	19	3/4	
0060B12-16	3/4	19	19	1	
0060B16-16	1	25,4	25	1	
0060B20-20	1.1/4	31,8	32	1.1/4	
0060B24-24	1.1/2	38,1	38	1.1/2	
0060B32-32	2	50,8	50	2	

**0160B 90° Накладная гайка BSP плоское упл**

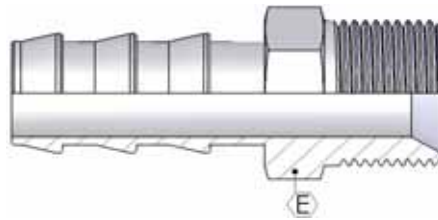
BSP 90° Swept elbow flat seat



part number	hose I.D.		Dimensions		
	in	mm	DN	thread	
				T	
0160B08-08	1/2	12,7	13	1/2	
0160B08-12	1/2	12,7	13	3/4	
0160B12-12	3/4	19	19	3/4	
0160B12-16	3/4	19	19	1	

## 0400B Штуцер метрика 60°

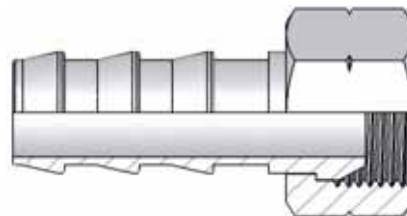
Metric Male 60° cone



part number	hose I.D.		Dimensions		
	in	mm	DN	thread	hex
				T	E
0400B04-14	1/4	6,4	06	M14-1,5	19
0400B05-14	5/16	7,9	08	M14-1,5	19
0400B06-14	3/8	9,5	10	M14-1,5	19

## 0100B Ниппель метрика 60°

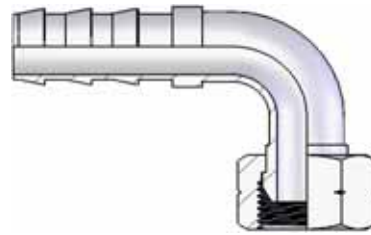
Metric Female 60° cone



part number	hose I.D.		Dimensions		
	in	mm	DN	thread	
				T	
0100B03-10	3/16	4,8	05	M10-1	
0100B03-12	3/16	4,8	05	M12-1,5	
0100B04-12	1/4	6,4	06	M12-1,5	
0100B04-14	1/4	6,4	06	M14-1,5	
0100B05-14	5/16	7,9	08	M14-1,5	
0100B05-16	5/16	7,9	08	M16-1,5	
0100B06-18	3/8	9,5	10	M18-1,5	
0100B08-18	1/2	12,7	13	M18-1,5	
0100B08-22	1/2	12,7	13	M22-1,5	
0100B10-22	5/8	15,9	16	M22-1,5	
0100B10-26	5/8	15,9	16	M26-1,5	
0100B12-26	3/4	19	19	M26-1,5	

## 0200B Ниппель 90° метрика 60°

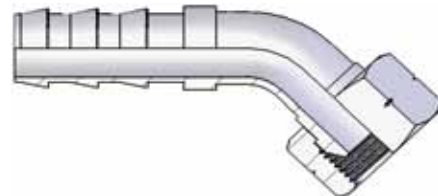
90° Metric Swept Elbow 60° cone



part number	hose I.D.		Dimensions		
	in	mm	DN	thread	T
0200B04-14	1/4	6,4	06	M14-1,5	
0200B05-16	5/16	7,9	08	M16-1,5	
0200B06-18	3/8	9,5	10	M18-1,5	
0200B08-22	1/2	12,7	13	M22-1,5	
0200B10-26	5/8	15,9	16	M26-1,5	
0200B12-26	3/4	19	19	M26-1,5	

## 0300B Ниппель 45° метрика 60°

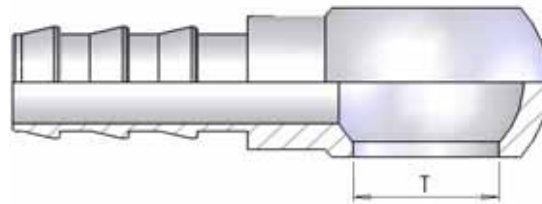
45° Metric Swept Elbow 60° cone



part number	hose I.D.		Dimensions		
	in	mm	DN	thread	T
0300B04-14	1/4	6,4	06	M14-1,5	
0300B05-16	5/16	7,9	08	M16-1,5	
0300B06-18	3/8	9,5	10	M18-1,5	
0300B08-18	1/2	12,7	13	M18-1,5	
0300B08-22	1/2	12,7	13	M22-1,5	
0300B10-26	5/8	15,9	16	M26-1,5	
0300B12-26	3/4	19	19	M26-1,5	

## 1350B Метрический банджо

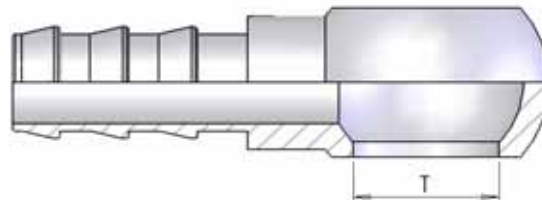
Metric Banjo



part number	hose I.D.		Dimensions		
	in	mm	DN	hole	
				T	
1350B04-10	1/4	6,4	06	M10-1	
1350B04-12	1/4	6,4	06	M12-1,5	
1350B04-14	1/4	6,4	06	M14-1,5	
1350B05-12	5/16	7,9	08	M12-1,5	
1350B05-14	5/16	7,9	08	M14-1,5	
1350B05-16	5/16	7,9	08	M16-1,5	
1350B06-16	3/8	9,5	10	M16-1,5	
1350B06-18	3/8	9,5	10	M18-1,5	
1350B08-18	1/2	12,7	13	M18-1,5	
1350B08-22	1/2	12,7	13	M22-1,5	
1350B10-18	5/8	15,9	16	M18-1,5	

## 1400B BSP Banjo

BSP Banjo



part number	hose I.D.		Dimensions		
	in	mm	DN	hole	
				T	
1400B04-04	1/4	6,4	06	1/4	
1400B05-04	5/16	7,9	08	1/4	
1400B05-06	5/16	7,9	08	3/8	
1400B06-04	3/8	9,5	10	1/4	
1400B06-06	3/8	9,5	10	3/8	
1400B08-06	1/2	12,7	13	3/8	
1400B08-08	1/2	12,7	13	1/2	
1400B10-06	5/8	15,9	16	3/8	
1400B10-08	5/8	15,9	16	1/2	
1400B10-12	5/8	15,9	16	3/4	
1400B12-12	3/4	19	19	3/4	
1400B16-12	1	25,4	25	3/4	
1400B16-16	1	25,4	25	1	